


LEARNING IN (AND FROM) BALTIMORE

HOW IS **MATERNAL HEALTH** BEING CONCEPTUALIZED IN BALTIMORE?



MOMCares

SERVING **BLACK + BLACK-IDENTIFYING WOMEN + FATHERS**

ANA RODNEY

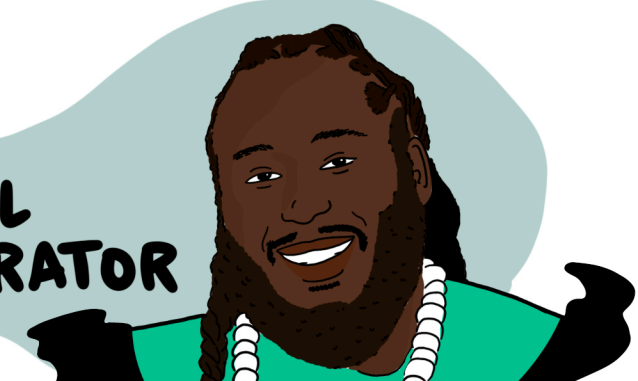


BALTIMORE HEALTHY START

WORKING IN COMMUNITIES WITH **INFANT MORTALITY 1½ X** THE NATIONAL RATE

TENELEE BAILEY

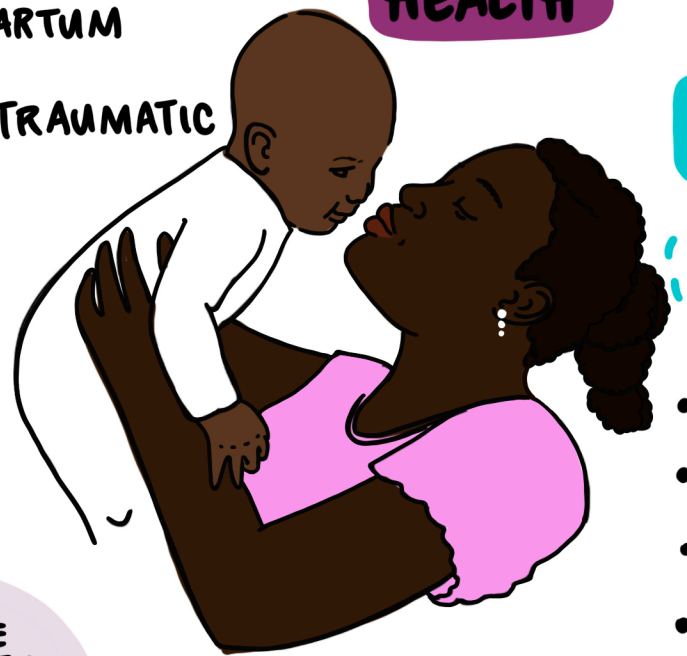
PANEL MODERATOR



DAVID OLAWUYI FAKUNLE

MISSION TO REVERSE THE **CRISIS** OF **BLACK MATERNAL HEALTH**

- NAVIGATING HIGH RISK PREGNANCIES + POST-PARTUM CARE
- HEALING CIRCLES FOR TRAUMATIC BIRTH EXPERIENCES
- **ADVOCATING** FOR MOTHERS DURING THE BIRTHING PROCESS + NICU



ACKNOWLEDGING: EVERY BIRTH IS DIFFERENT

WORKING TO: ERADICATE SYSTEMIC RACISM IN THE HEALTH CARE SYSTEM

PARTNERING WITH GRASSROOTS ORGANIZATIONS TO PUT PEOPLE BACK INTO THE EQUATION

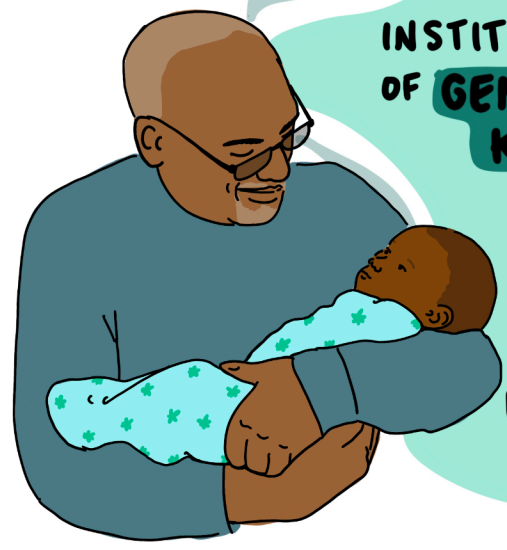
MISSION TO REDUCE **DISPARITIES** IN MATERNAL HEALTH

- PATIENTS AS PARTNERS**
- **IMPROVE** WOMEN'S HEALTH
 - **IMPROVE** FAMILY HEALTH + WELLNESS
 - **SUPPORTING** FATHERS
 - **OUTREACH SERVICES**
 - ⇒ PANTRY
 - ⇒ EMERGENCY SUPPLIES
 - ⇒ PARENTING CLASSES

IDENTIFY + UNDERSTAND TO PREVENT

ADVOCACY
EXPERIENCE INFORMED
DRIVEN BY COMMUNITY

A SHARED UNDERSTANDING



IMPORTANCE OF SHARED CULTURE

SEEING ONESELF REFLECTED IN THE HEALTHCARE SYSTEM

INSTITUTIONAL MEMORY OF **GENERATIONAL KNOWLEDGE**

ENCOURAGING ELDER TO ENGAGE IN THE PROCESS